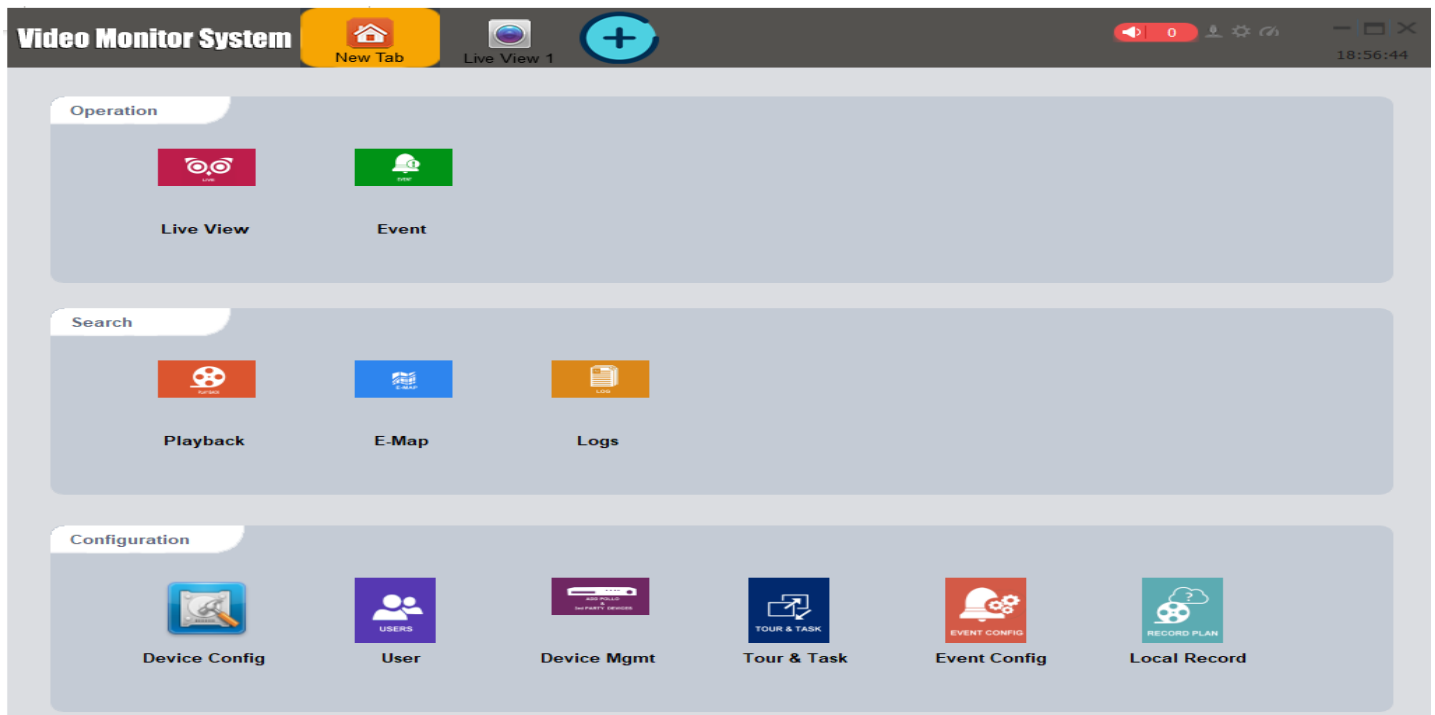




Sparsh Video Management Software

FEATURES

- Supports up to 64 IP cameras in single System
- Supports the compression methods; H.265 and H.264
- Save Views and Sequencing of views with time intervals.
- Customized views of any number and size based on user input
- Triplex mode: Live View, Recording, Playback at the same time.
- Automatic Recording Archiving on full disk space based on FIFO.
- Export recordings according to user chosen date ,time and format
- Enables fast discovery of camera devices using methods such as Universal Plug And Play.
- Digital Zoom in Live and Playback with both zoomed image and original image simultaneously





Recording & Storage

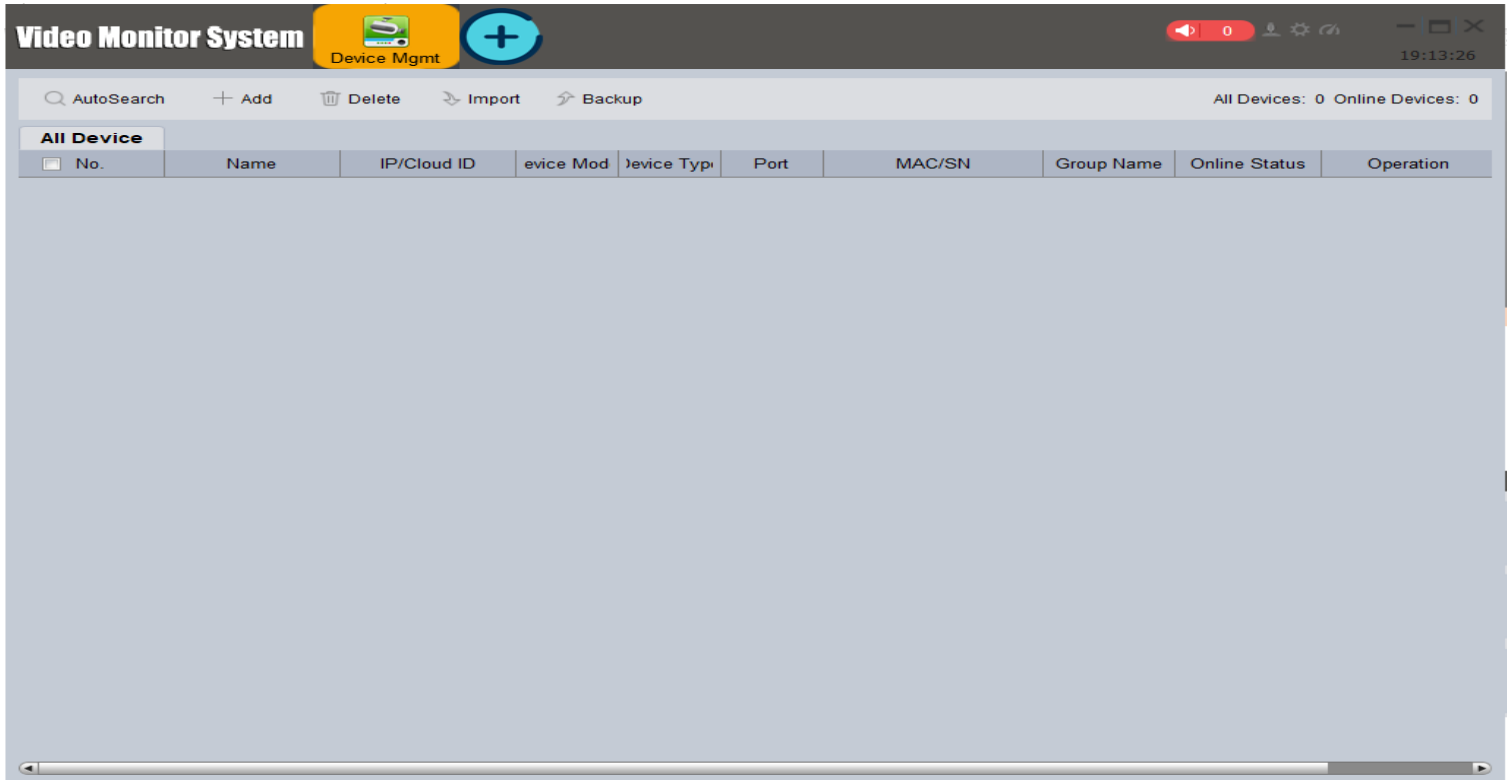
- Video Recording and Management as Windows service
- Audio and Video recording on same file.
- Record only key (I)frames(H265, H.264)
- Scheduled Recordings
- Motion based recordings.
- Pre-Post buffer recording for events
- Storage and Bandwidth calculator defining storage drive at camera level.
- Define limits and alerts for low disk space at warning and recording stopped levels
- Both Camera Independent and camera dependent (for certain models) motion detection.
- Recordings of 64 cameras. Expandable based on system, storage media and network bandwidth availability.
- Video Recording: H.265, H.264. All Camera supported resolutions and frame rate.

Continuous and Event based recording

- Normal continuous recording
- Motion based recording
- Recording at low and high frame rate based on events
- Video Blinking and Pop Up alarms
- Get event alerts on all Clients based on user assigned cameras
- Events based recording: Pre-Post buffer recording up to 10 minutes
- Low frame to high frame rate recording on events

Device Management

- Automatic Device discovery over the Network.
- Add all cameras in one click.
- Edit settings for all cameras at one click
- Defining camera and assigning user roles/privileges



User Management

- Defining users with their roles
- Cameras assignment to users
- Encrypted Password Authentication

Events, Alarms & Logs Management

- Motion Detection, Human Detection Events
- Recording and Live View aborted Events
- Signal Loss events
- User Login and Server start- stop logs
- Archiving Success-Failure Events
- Low disk space events
- Email, SMS alerts on configurable events
- Quick Event based search for recorded videos



Motion Detection

- Sensitivity parameters
- Turn on/off motion detection based on day/date/time schedule
- Motion based Pre-Post Buffer Recordings

Live View Client

- Live View of 64 cameras simultaneously on a single system provided hardware support
- Default, Custom live view screen configuration
- Live View of Cameras
- All camera supported resolutions and frame rates.
- Configurable Matrix views with size and number of cameras. Pre-defined views from 1x1 to 8x8
- Matrix Switching: Save and retrieve user views with pre-loaded cameras Function buttons: Snapshot, Camera settings, Audio-Video settings, Volume
- Camera Sequencing : Select cameras and time interval Option to view camera from server or directly.
- Support for Local and Remote live view access
- Screen Lock and background live view enabling
- Live Events in live view
- Video stream capture from Direct Camera or from Sparsh Video Streaming Server

Configurations Client

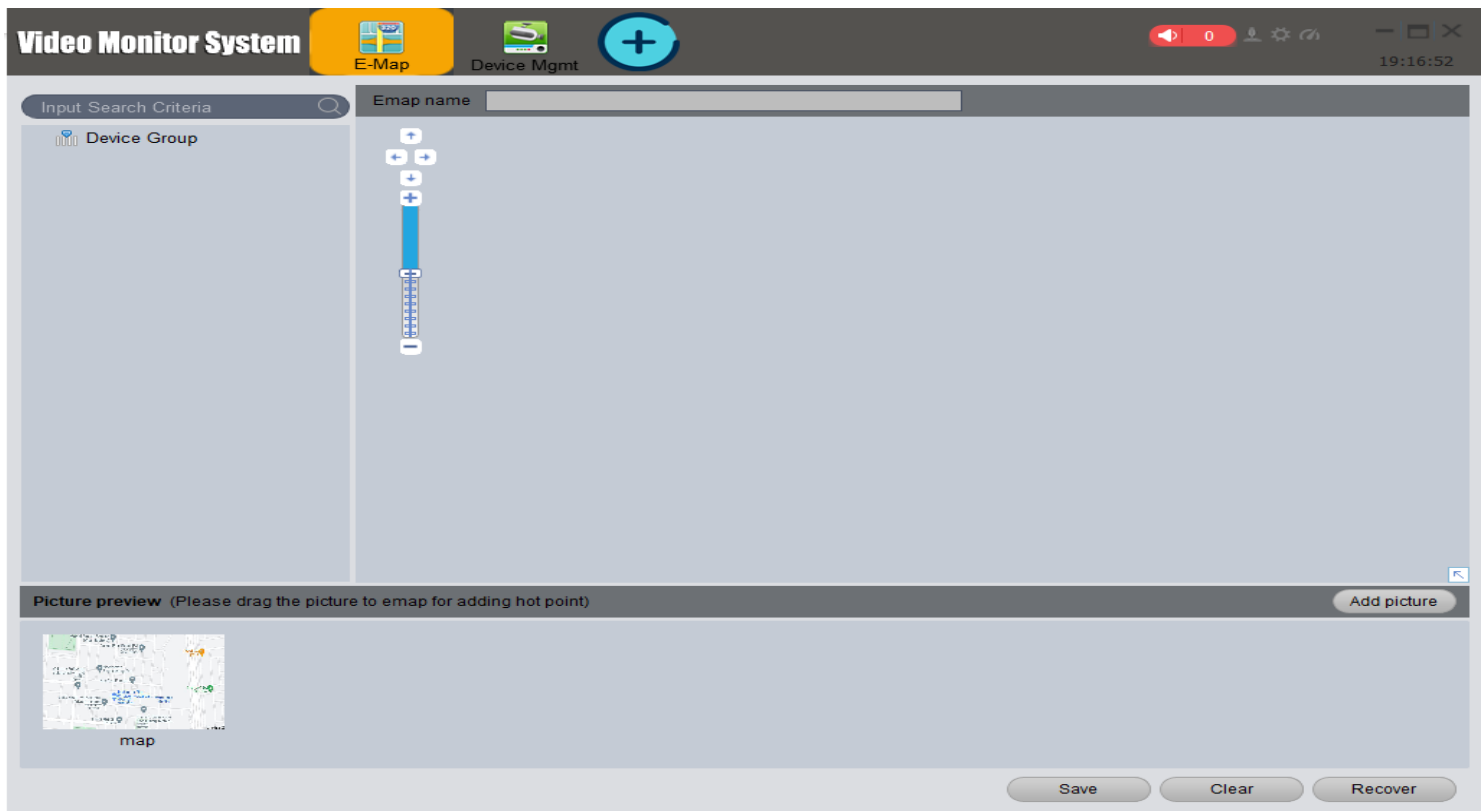
- Configuration client is the user Interface for configuring Sparsh server.
- Device, server, events, alerts , alarms and schedules settings
- Test Live view, recording and streaming properties of devices
- Storage settings for add, edit, delete of storage drives
- Apply settings to single or multiple devices
- Support for Remote and Local Configuration setting
- Remote Camera configuration
- Camera live view, recording and streaming configuration Playback Client
- Intelligent Search based on Date/Time/Camera
- Play, Stop, Pause, Fast forward, Seek, Slow-Playing options
- Digital zoom in Playback with Original picture and Zoomed Picture
- Video file export to play files in VLC player
- Remote and Local access of Recorded Videos

Control PTZ cameras by using mouse

- PTZ preset positions,
- Home,
- Auto Pan

Map

- Importing of maps supporting all standard image formats i.e. file types JPG, PNG, GIF, BMP
- Supports Google Maps for location search and saving the map image
- Unlimited level of linking of E-maps in hierarchical tree manner
- Easy interface via Drag and Drop of the cameras on to the map
- Camera blinking in case of event detection alerts passed by Management Server
- Camera video stream disconnection detection and automatic display of the connection status
- Any time Live view display of the camera video with just a mouse click of the Camera icon on map





Device Config:

- Encode config
- PTZ Config
- Overlay
- Video detect
- Record config

Live View Client:

- View Camera
- Screen view
- Live system events
- PTZ control
- Camera Sequencing
- Live events

Playback Client:

- Event Snapshot Search
- Recording Search
- Multiple Playback
- Image Enhancement
- Digital Zoom
- Slow and Fast Forward Play